



## DESCRIPTION

### General

Brake light camera Mercedes Vito 2016> (twin doors); SONY HD CMOS; 800TVL

### Features

- Sony CMOS Lens
- Resolution 720x480 pixels (NTSC)
- 800 TV lines
- IR-Leds
- Ignition Power proof (+15)
- IP68 Waterproof
- E-mark certification: E9-10R.05.1811
- CE-mark: EN 55022: 2010; EN 61000-3-2:2006+A1:2009+A2:2009; EN61000-3-3:2008; EN 55024:2010
- FCC-mark: ANSI C63.4-2003
- 2 Year warranty & Support

## EXCLUSIVE CAMERA FEATURES

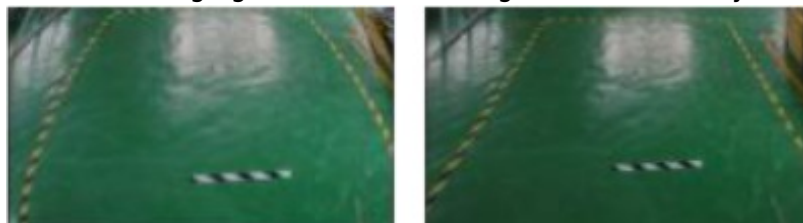
### SONY CCD

High End SONY CMOS Lens, highest quality brake light camera lens in the market.

# SONY

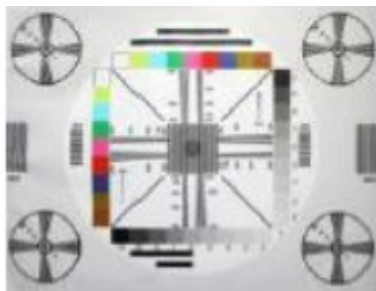
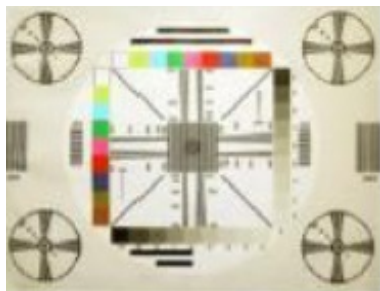
### Bulging auto correction

Unwanted bulging in the camera image is automatically corrected.



### Discoloration auto correction

Unwanted discolorations in the camera image is automatically corrected.



### Overlighting auto correction

The appearance of a bright background or lamps in the camera image is automatically corrected.



### Ignition Power proof (+15)

It is possible to connect the powersupply to an ignition feed (+15), because we use the highest quality camera.

In this way you are able to watch the camera also in DRIVE gear or via manual selection.

### NOTES

---

- We recommend that the installation will be performed by a qualified specialist
- Check also the other tabs for "Compatibility" - "Package contents" - "Product specifications"

### LEGAL NOTICE

---

Please check before purchase if it is aloud to install this camera and it wont affect your MOT.

**NAVcam**  
camera solutions

### COMPATIBILITY

---

#### CAR

This camera is compatible with the following vehicles:

**Mercedes**

Vito 2016 - 20.. with twin doors only

**NOTES**

---

- RCA output = male
- CVBS signal is NTSC