

CARplay
Carplay & Android Auto

DESCRIPTION

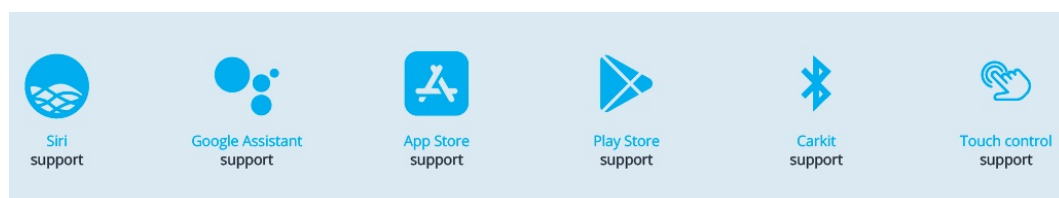
General

Upgrade your **BMW or Mini** with CARPLAY & ANDROID Auto to your existing system. You can run apps from your iPhone Via CarPlay & Android Auto without touching your iPhone. You can control this Carplay kit via the **iDrive controller** and via voice control (Siri).

Example video

Features

- Control via iDrive controller
- Control via voice (Siri & Google Assistant)
- Run navigation apps like; Google maps, TomTom & Waze
- Play music apps like; Spotify, Podcast, Music
- Making phone calls and listening to your messengers
- Rear camera input
- Front camera input
- AV input
- Original button support
- Picture while driving
- 2 Year warranty & Support



EXCLUSIVE CARPLAY & ANDROID AUTO FEATURES

Navigation with Apple Maps / Waze GPS app

Free turn-by-turn navigation with lane guidance, live traffic conditions, points of interest, and more

Hands-free phone and messaging

Make calls and send messages without taking your hands off the wheel, via Phone and iMessage

Info and assistance

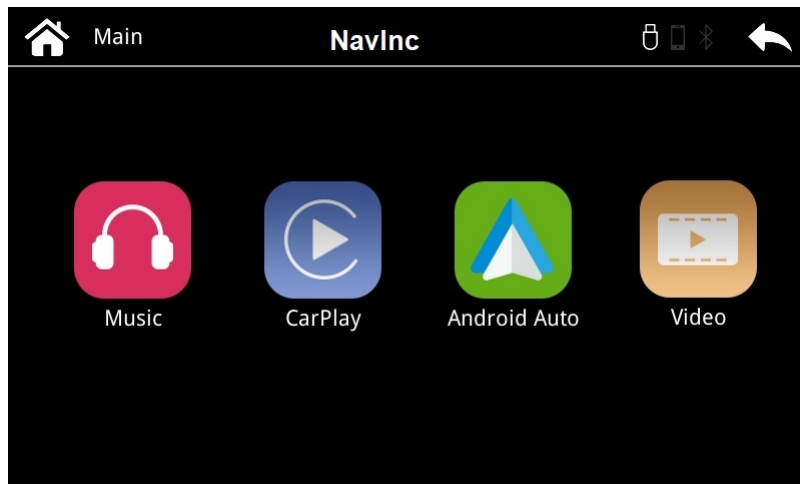
Get weather, traffic, commute information and more organized into simple cards

Bring your music

Listen to your music and playlists in the car with your built-in stereo system

Wireless CARplay (optional)

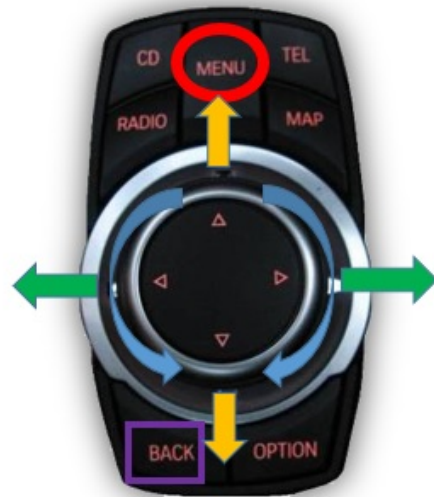
Wireless CARplay as option available.



EXCLUSIVE INTERFACE FEATURES

iDrive Control

Long press the iDrive "MENU" button to switch to access the Carplay menu.
With the iDrive controller you can select the app or activate Siri.



↔: Short press - Previous track / Next track

↻: wheel spin: moving left and right

↑↓: Short press- Moving left / right

↓: Long press- moving to the bottom menu

○ Menu button: Select

□ Back button: moving to the bottom menu

Steering wheel Control

Long press the "VOICE" button on the steering wheel to access the Carplay menu and use the Volume buttons to set the volume.



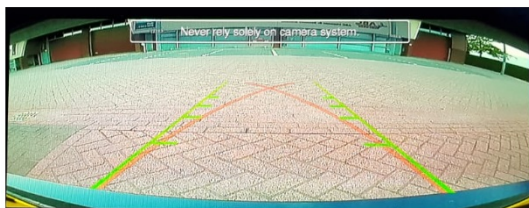
Siri Voice Control

After switch to Carplay menu, we can use Siri voice control to make call, listen to music and voice message, navigation, reply message, etc.

Rear camera input

The interface support original and aftermarket rear camera input. Including original parking sensor information display, split screen and full screen mode.

Full screen

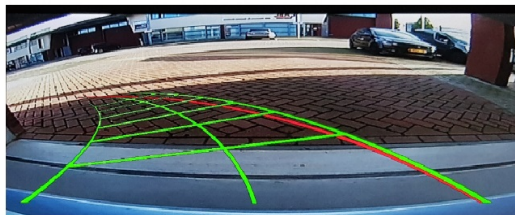


Split screen



Intelligent Park Assist System (IPAS)

The interface has a build in Intelligent parking guideline function for the aftermarket camera.



AV input

The interface support original and aftermarket rear camera input. Including original parking sensor information display, split screen and full screen mode.

Front camera input

Front camera input which will be selected after leaving the reverse gear.

Via the OSD menu you can select show time:

- 3 sec
- 5 sec
- 10 sec
- 15 sec

NOTES

- It is essential to have an Aux-in
- We recommend that the installation will be performed by a qualified specialist
- Check the other tabs for "Compatibility" - "Package contents" - "Product specifications"

DISCLAIMER

Apple, iPod, iPhone, iTunes, CarPlay and the CarPlay logo are registered trademarks of Apple Inc., registered in the U.S. and other countries. Android, Android Auto, Google Maps, Waze and Talk to Google are registered trademarks of Google Inc. The Bluetooth® word mark and logos are registered trademarks owned by the Bluetooth SIG, Inc.

COMPATIBILITY

CAR

This kit is compatible with the following models:

BMW

1 serie (E81/E82/E87/E88)	2009-2011	iDrive CIC Professional (8.8" & 10.25")
3 serie (E90/E91/E92/E93)	2009-2011	iDrive CIC Professional (8.8" & 10.25")
5 serie (E60/E61)	2009-2010	iDrive CIC Professional (8.8" & 10.25")
5 serie (F10/F11)	2009-2012	iDrive CIC Professional (8.8" & 10.25")
5 serie GT (F07)	2009-2012	iDrive CIC Professional (8.8" & 10.25")
6 serie (E63)	2009-2011	iDrive CIC Professional (8.8" & 10.25")
6 serie (F12/F13/F14)	2011-2012	iDrive CIC Professional (8.8" & 10.25")
7-serie (F01/F02)	2009-2012	iDrive CIC Professional (8.8" & 10.25")
X1 serie (E84)	2009-2014	iDrive CIC Professional (8.8" & 10.25")
X3-serie (F25)	2010-2012	iDrive CIC Professional (8.8" & 10.25")
X5 serie (E70)	2009-2013	iDrive CIC Professional (8.8" & 10.25")
X6 serie (E71)	2009-2015	iDrive CIC Professional (8.8" & 10.25")
Z4 serie (E89)	2009-20..	iDrive CIC Professional (8.8" & 10.25")

MINI

Cabrio (R57)	2009-2016	iDrive CIC Professional (8.8")
Clubman (R55)	2010-2015	iDrive CIC Professional (8.8")
Countryman (R60)	2010-2014	iDrive CIC Professional (8.8")
Coupe	2011-2015	iDrive CIC Professional (8.8")
One	2011-2014	iDrive CIC Professional (8.8")
Paceman	2013-2014	iDrive CIC Professional (8.8")
Roadster	2012-2015	iDrive CIC Professional (8.8")

Rolce Royce

Ghost	2010-2013	iDrive CIC Professional (8.8" & 10.25")
Phantom	2010-2013	iDrive CIC Professional (8.8" & 10.25")
Phantom Coupe	2010-2013	iDrive CIC Professional (8.8" & 10.25")
Phantom Drophead	2009-2013	iDrive CIC Professional (8.8" & 10.25")

REQUIREMENT

AUDIO OUTPUT	The interface inserts ONLY video signals into the infotainment. It is essential to have an Aux-in, when using audio from the CARplay box
VIDEO OUTPUT	Video goes via LVDS
CONTROL	You can control CARplay & Android AUTO via iDrive controller
SCREEN	Compatible with 6.5", 8.8" & 10.2"
OPEN HU	Do not need to open the monitor
FRONT CAMERA	The front camera input will automatically switch after leaving the reverse gear. You can set the display time in seconds via the OSD menu (1-15 sec). It is also possible to select the FRONT camera input manually
OEM REAR CAMERA	The interface does switch back automatically to the OEM rear camera input when the reverse gear is engaged.
GUIDELINES	Static lines are available via the interface OSD menu
iPAS	iPAS option is available (moveable grid lines)
PIP	PiP option (split screen) is available (Picture in Picture)
REAR SELECT CAMERA INPUT	Interface will respond on CAN for cars with auto gearbox. When manual gear box please use the rear detection wire.
INSTALLATION	We recommend that the installation will be performed by a qualified specialist

MEDIA PLAYER

Media player support the following files:

MUSIC	MP3
VIDEO	MP4

MEDIA PLAYER

Media player support the following files:

MUSIC	MP3
VIDEO	MP4

ANDROID AUTO

Your Phone must be compatible with Android AUTO & Androi Auto app must be available in your county.

An Android phone running Android 5.0 (Lollipop) and up with a data plan. For best performance, we recommend Android 6.0 (Marshmallow) and up. You can check your phone's software version by looking at the About Device section under Settings

Please check the following link for more info about Android Auto:

[LINK](#)

Apps you can use with Android Auto:

[LINK](#)

If your country is not supported (app is not available in Google Playstore) please see the following link how to get the App:

[LINK](#)

APPLE CARPLAY

Your Phone must be compatible with Apple Carplay.

Please check the following link for more info about Apple Carplay:

[LINK](#)