

CARplay
Carplay & Android Auto

DESCRIPTION

General

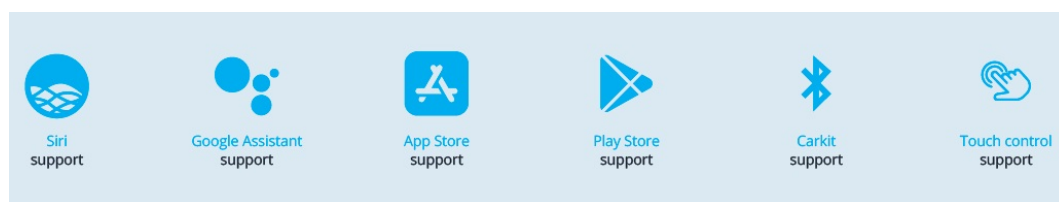
Upgrade your **PORSCHE** with CARPLAY & ANDROID Auto to your existing system. You can run apps from your iPhone Via CarPlay & Android Auto without touching your iPhone. You can control this kit via the **ORIGINAL PCM3.0** touch screen and via voice control (Siri).

Complete Apple CARplay & Android retrofit into the car without change nor removal anything from the vehicle. Simply connect your Phone to the USB port and you can start using it.

Example video

Features

- Control via original PCM3.0 touch screen
- Rear camera input
- Front camera input
- AV input
- Original button support
- Picture while driving
- Control via voice (Siri & Google Assistant)
- Run navigation apps like; Google maps, TomTom & Waze
- Play music apps like; Spotify, Podcast, Music
- Making phone calls and listening to your messengers
- 2 Year warranty & Support



EXCLUSIVE CARPLAY & ANDROID AUTO FEATURES

Navigation with Apple Maps / Waze GPS app

Free turn-by-turn navigation with lane guidance, live traffic conditions, points of interest, and more

Hands-free phone and messaging

Make calls and send messages without taking your hands off the wheel, via Phone and iMessage

Info and assistance

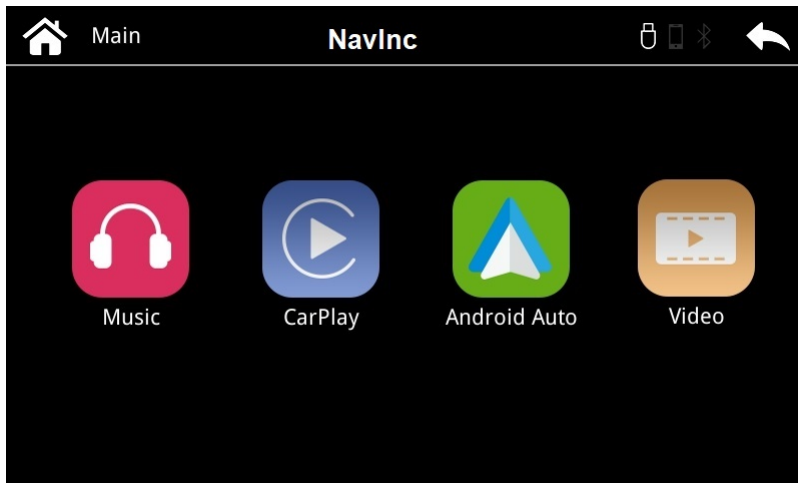
Get weather, traffic, commute information and more organized into simple cards

Bring your music

Listen to your music and playlists in the car with your built-in stereo system

Wireless CARplay (optional)

Wireless CARplay as option available.



EXCLUSIVE MEDIA PLAYER FEATURES

Features:

- Music playback via USB
- Video playback via USB



EXCLUSIVE INTERFACE FEATURES

Features:

- 2* AV input
- Reverse Camera input
- Front camera input
- Image retention while driving

- Adjustable parking lines
- OSD menu

Activation via OEM

Activation interface via original button:

PCM3.0



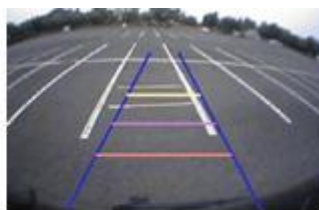
CAMERA FEATURES

Rear camera input with Parking guidelines

Rear camera input with parking guidelines option.

The guidelines makes it much easier to determine the distance to the object you are driving towards.

The guidelines are adjustable horizontal as well as vertical so the lines can be adjusted to the car.



Adjustable guide lines

Front camera input

Front camera input which will be selected after leaving the reverse gear.

Via the OSD menu you can select show time:

- 3 sec
- 5 sec
- 10 sec
- 15 sec

NOTES

- It is essential to have an Aux-in

- We recommend that the installation will be performed by a qualified specialist
- Check the other tabs for "Compatibility" - "Package contents" - "Product specifications"

DISCLAIMER

Apple, iPod, iPhone, iTunes, CarPlay and the CarPlay logo are registered trademarks of Apple Inc., registered in the U.S. and other countries. Android, Android Auto, Google Maps, Waze and Talk to Google are registered trademarks of Google Inc. The Bluetooth® word mark and logos are registered trademarks owned by the Bluetooth SIG, Inc.



COMPATIBILITY

CAR

This kit is compatible with the following models:

Porsche

Boxster	2009-2012	PCM3.0 navigation system
Cayenne E1	2008-2010	PCM3.0 navigation system
911	2008-2011	PCM3.0 navigation system
Cayman	2009-2013	PCM3.0 navigation system

REQUIREMENT

AUDIO OUTPUT	It is essential to have an Aux-in, when using audio from this device. If you do not have AUX input you can use the A2DP from the car.
CVBS	Only compatible with NTSC sources.
LVDS	The video output from the LVDS version is LVDS and CVBS
RGB	The video output from the RGB version is only RGB (800x480) resolution
NOB	It is not possible to use the external NOB in combination with UART touch at the same time (nob is optional).
INSTALLER	We recommend that the installation will be performed by a qualified specialist

MEDIA PLAYER

Media player support the following files:

MUSIC	MP3
VIDEO	MP4

ANDROID AUTO

Your Phone must be compatible with Android AUTO & Androi Auto app must be available in your county.

An Android phone running Android 5.0 (Lollipop) and up with a data plan. For best performance, we recommend Android 6.0 (Marshmallow) and up. You can check your phone's software version by looking at the About Device section under Settings

Please check the following link for more info about Android Auto:

[LINK](#)

Apps you can use with Android Auto:

[LINK](#)

If your country is not supported (app is not available in Google Playstore) please see the following link how to get the App:

[LINK](#)

APPLE CARPLAY

Your Phone must be compatible with Apple Carplay.

Please check the following link for more info about Apple Carplay:

[LINK](#)