

## DESCRIPTION

### General

Upgrade your Porsche with CARPLAY to your existing system. You can run apps from your iPhone Via CarPlay without touching your iPhone. You can control this Carplay kit via the original CDR-31 touch screen and via voice control (Siri).

Complete Apple CARplay retrofit into the Porsche system without change nor removal anything from the vehicle. Simply connect your iPhone to the USB port and you can start using CARplay.

### Example installation:

### Features

- Carplay control via original PCM31 touch screen
- Carplay control via voice (Siri)
- Carplay navigation apps like; Google maps, TomTom & Waze
- Carplay music apps like; Spotify, Podcast, Music
- Making phone calls and listening to your messengers
- Rear camera input
- AV input
- Steering wheel button support
- PCM button support
- Picture while driving

## EXCLUSIVE CARplay FEATURES

### Navigation with Apple Maps / Waze GPS app

Free turn-by-turn navigation with lane guidance, live traffic conditions, points of interest, and more

### Hands-free phone and messaging

Make calls and send messages without taking your hands off the wheel, via Phone and iMessage

### Info and assistance

Get weather, traffic, commute information and more organized into simple

cards

### **Bring your music**

Listen to your music and playlists in the car with your built-in stereo system

## **EXCLUSIVE CAR FEATURES**

---

### **Features:**

- 3\* AV input
- Reverse Camera input
- Front camera input
- Image retention while driving
- Adjustable parking lines
- Intelligent Park Assist System (IPAS) - moveable parking lines

### **Activation via OEM**

Activation NAVplay via original "NAVI" button

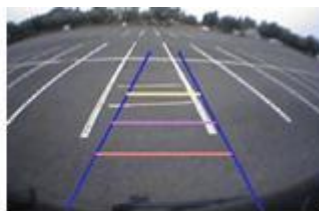


## **CAMERA FEATURES**

---

### **Parking guidelines**

In the camera image on screen parking guidelines can be displayed. This makes it much easier to determine the distance to the object you are driving towards. The guidelines are adjustable horizontal as well as vertical so the lines can be adjusted to the car.



**Ajustable guide lines**

### **AV input**

The interface support original and aftermarket rear camera input. Including original parking sensor information display, split screen and full screen mode.

## **PACKAGE CONTENTS**

---

**The following is provided in the set:**

- Multimedia video interface (IF-PO-CDR31V): 1x
- CARplay module: 1x
- Installation- & user instructions
- Warranty

## NOTES

---

- It is essential to have an Aux-in
- We recommend that the installation will be performed by a qualified specialist

## LEGAL INFORMATION

---

The driver of the vehicle should not be inferred from the motion images. In many countries, watching movies while driving is prohibited. Therefore we accept no responsibility for material or personal injuries, directly or indirectly, due to installation of the interface modules.

Interface and Software basic information:

The NavInc interfaces are no navigation systems or screens to replace the navigation system. The NavInc interfaces enable the possibilities to connect different Audio/Video sources to the navigation system.

Manufacturers create adjusted software and hardware versions, options and enhancements which ensures that the compatibility of the products cannot be guaranteed 100%. Compatibility lists are based on customer feedback and experiences and will constantly be updated for optimal customer support.

### Compatibility

This NAVplay kit is suitable for the following models:

#### Porsche

Boxster	2012-20..	CDR31 radio system without navigation
Cayenne E2	2010-20..	CDR31 radio system without navigation
Cayman	2013-20..	CDR31 radio system without navigation
911 Carrera	2011-20..	CDR31 radio system without navigation
911 Carrera cabriolet	2012-20..	CDR31 radio system without navigation
Macan	2014-20..	CDR31 radio system without navigation
Panamera	2009-20..	CDR31 radio system without navigation

#### Note:

- It is essential to have an Aux-in
- We recommend that the installation will be performed by a qualified specialist
- If you have OEM CarKit & Audio streaming option via bluetooth, AUX input is not needed.