

NAVconnect

integrated solutions



DESCRIPTION

General

Front & Rear camera interface Jeep & Dodge Uconnect 8.4" - 2018>. This interface allows you to add an aftermarket reverse camera and/or front camera to the factory screen. .

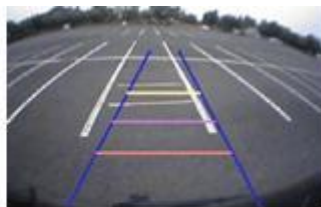
Features

- # Auto switching back up camera
- # Auto switching front camera input
- # No programming required
- # Setting menu to adjust; brightness/contrast/saturation
- # Setting menu to adjust front camera time to show
- # Setting menu to adjust position of parking lines

CAMERA FEATURES

Parking guidelines

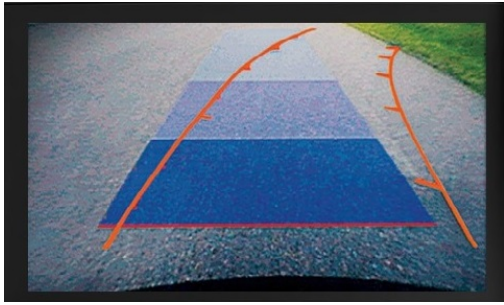
In the camera image on screen parking guidelines can be displayed. This makes it much easier to determine the distance to the object you are driving towards. The guidelines are adjustable horizontal as well as vertical so the lines can be adjusted to the car.



Ajustable guide lines

Intelligent Park Assist System (IPAS)

The interface have also the Intelligent Park Assist System (iPAS). With this function the guidelines will respond on the steering wheel position. The guide lines are adjustable horizontal and vertical via the interface OSD menu.



PACKAGE CONTENTS

The following is provided in the set:

- Main interface board (QCPASS1314): 1x
- Small board (DODGE-5CH-EX-V1.1): 1x
- Multi cable (HARETC03035): 1x
- CAN P&P (HARETC0091): 1x
- FFC cable short (FFCABL0082): 1x
- FFC cable long (FFCBAL0039): 1x
- Remote (REMOTE0001): 1x
- Infrared cable (HIRCAB0002): 1x
- Button (HARETC0001): 1x
- Installation- & user instructions
- Warranty

NOTES

- We recommend that the installation will be performed by a qualified specialist
- iPAS not compatible with all models (limited)

PRODUCT SPECIFICATIONS

COMPATIBILITY

Compatible with the following models

Jeep

Compass	2018-20..	Uconnect Smart touch (8.4")
Grand Cherokee	2018-20..	Uconnect Smart touch (8.4")
Renegade	2018-20..	Uconnect Smart touch (8.4")
Wrangler	2019-20..	Uconnect Smart touch (8.4")

*iPAS not always available

Dodge

Challenger	2018-20..	Uconnect Smart touch (8.4")
Ram*	2018-2019	Uconnect Smart touch (8.4")

*iPAS not always available

Remarks:

- Only in combination with 8.4" Uconnect navigation system.
- Only compatible with NTSC sources
- Also possible to use the interface stand alone for reversing and/or forward driving camera function.
- Automatic switching to camera on navigation level.