



## DESCRIPTION

### General

Brake light camera Toyota Pro-ace / Citroen Jumpy / Peugeot Expert 2016> (NTSC)

### Features

- Sony CCD Lens
- Resolution 976 x 494 pixels (NTSC)
- 650-700 TV lines
- Ignition Power proof (+15)
- IP68 Waterproof
- E-mark certification: E9-10R.05.1811
- CE-mark: EN 55022: 2010; EN 61000-3-2:2006+A1:2009+A2:2009; EN61000-3-3:2008; EN 55024:2010
- FCC-mark: ANSI C63.4-2003
- 2 Year warranty & Support

## EXCLUSIVE CAMERA FEATURES

### SONY CCD

High End SONY CCD Lens, highest quality brake light camera lens in the market.

**SONY**

### Adjustable head

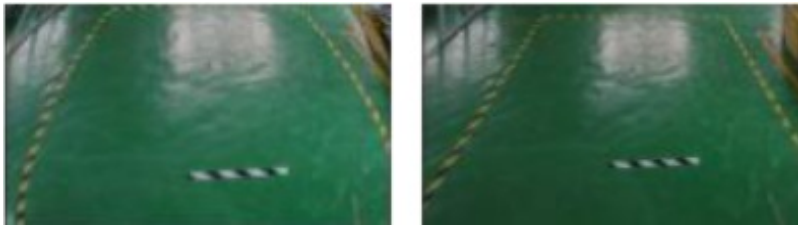
Possible to adjust the camera lens.

**Angle Adjustable 30°**



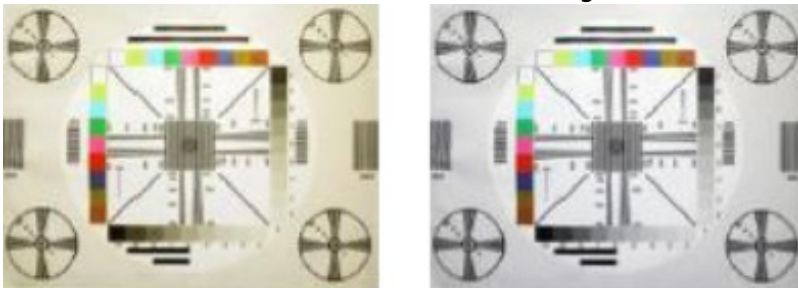
### **Bulging auto correction**

Unwanted bulging in the camera image is automatically corrected.



### **Discoloration auto correction**

Unwanted discolorations in the camera image is automatically corrected.



### **Overlighting auto correction**

The appearance of a bright background or lamps in the camera image is automatically corrected.



### **Ignition Power proof (+15)**

It is possible to connect the powersupply to an ignition feed (+15), because we use the highest quality camera.

In this way you are able to watch the camera also in DRIVE gear or via manual selection.

### **NOTES**

- 
- We recommend that the installation will be performed by a qualified specialist
  - Check also the other tabs for "Compatibility" - "Package contents" - "Product specifications"

## LEGAL NOTICE

---

Please check before purchase if it is aloud to install this camera and it wont affect your MOT.



## COMPATIBILITY

---

### CAR

This camera is compatible with the following vehicles:

#### Fiat

Scudo 2022-20..

#### Toyota

ProAce 2016-20..

#### Peugeot

Expert 2016-20..

Traveller 2016-20..

#### Citroen

Jumpy 2016-20..

SpaceTourer 2016-20..

Dispatch 2016-20..

#### Opel

Opel Vivaro C 2019-20..

## NOTES

---

- RCA output = male
- CVBS signal is NTSC