



## DESCRIPTION

### General

Brake light camera Renault Trafic/Opel Vivaro/Fiat Talento 2014> (NTSC) with SONY CCD lens.

### Features

- Sony CCD Lens
- Resolution 976 x 494 pixels (NTSC)
- 650-700 TV lines
- IR-Leds
- Ignition Power proof (+15)
- IP68 Waterproof
- E-mark certification: E9-10R.05.1811
- CE-mark: EN 55022: 2010; EN 61000-3-2:2006+A1:2009+A2:2009; EN61000-3-3:2008; EN 55024:2010
- FCC-mark: ANSI C63.4-2003
- 2 Year warranty & Support

## EXCLUSIVE CAMERA FEATURES

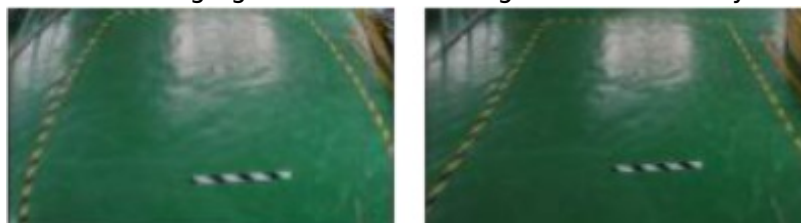
### SONY CCD

High End SONY CCD Lens, highest quality brake light camera lens in the market.

# SONY

### Bulging auto correction

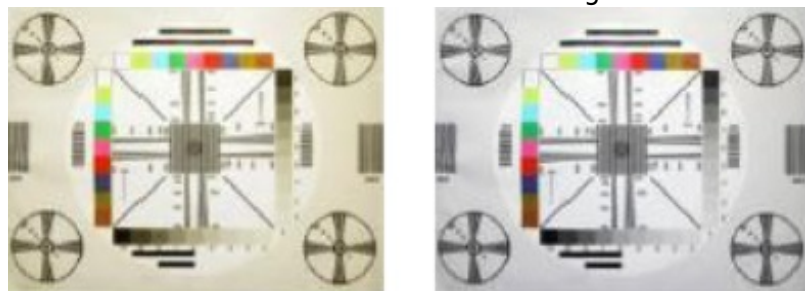
Unwanted bulging in the camera image is automatically corrected.



### Discoloration auto correction



Unwanted discolorations in the camera image is automatically corrected.



### **Overlighting auto correction**

The appearance of a bright background or lamps in the camera image is automatically corrected.



### **Ignition Power proof (+15)**

It is possible to connect the powersupply to an ignition feed (+15), because we use the highest quality camera.

In this way you are able to watch the camera also in DRIVE gear or via manual selection.

### **NOTES**

---

- We recommend that the installation will be performed by a qualified specialist
- Check also the other tabs for "Compatibility" - "Package contents" - "Product specifications"

### **LEGAL NOTICE**

---

Please check before purchase if it is aloud to install this camera and it wont affect your MOT.

**NAVcam**  
camera solutions

### **COMPATIBILITY**

---

#### **CAR**



This camera is compatible with the following vehicles:

**Renault**

Trafic (III) 2014-20.. (with barn doors)

**Opel**

Vivaro (B) 2014-2020 (with barn doors)

**Fiat**

Talento 2014-20.. (with barn doors)

**Nissan**

NV300 2014-20.. (with barn doors)

**NOTES**

---

- RCA output = male
- CVBS signal is NTSC