

Multimedia video interface VAG MIB3

Art. Nr: IF-VAG-7GPV

DESCRIPTION

General

The NavInc NAVconnect interfaces allow for connecting video sources to the original VAG MIB3 systems (8.8" & 10").

The interface is equipped with various options such as; 1* LVDS input, 1* Front camera input & 1* Rear camera input.

Example video

Features

- 1x Rear camera input
- 1x Front camera input (with auto switch OFF)
- 1x LVDS input
- 2x HDMI input (optional)
- Adjustable parking lines via OSD menu
- iPAS (moveable grid lines)
- 3 Year warranty & Support

EXCLUSIVE INTERFACE FEATURES



Rear camera
input



Front camera
input



iPAS
moveable gridlines



Grid
gridlines



Audio/video input
CVBS - input



OEM button
control

Features:

- OEM button support
- Rear camera input (CVBS - NTSC)
- iPAS lines (moveable grid lines)

- Front camera input (CVBS - NTSC)
- Time delay setting front camera input (3-15sec)
- OSD menu (to adjust interface settings)

NAVconnect OEM Button



	Button	Operation	Function
MIB3	RETURN	Long Press	Mode switch

CAMERA FEATURES

Rear camera input with Parking guidelines

Rear camera input with parking guidelines option.

The guidelines makes it much easier to determine the distance to the object you are driving towards.

The guidelines are adjustable horizontal as well as vertical so the lines can be adjusted to the car.



Ajustable guide lines

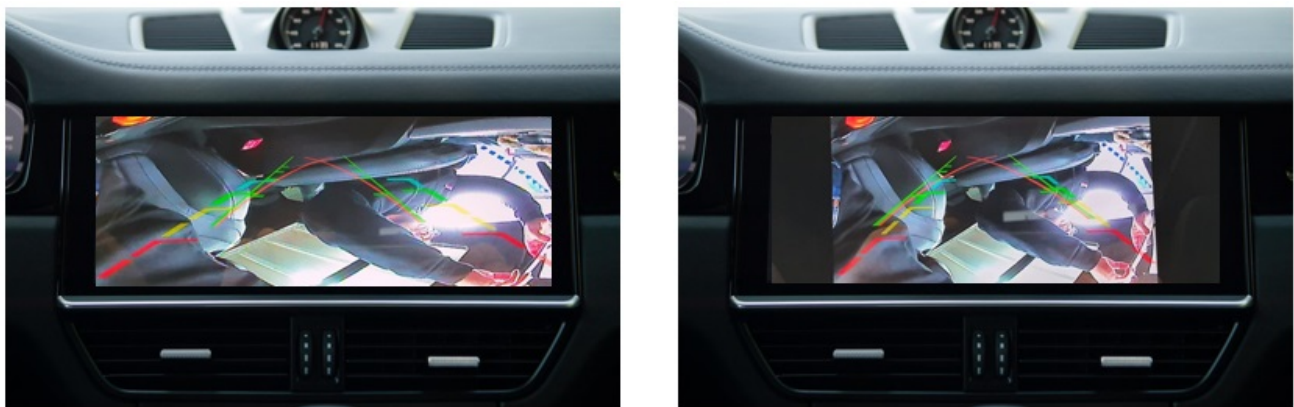
Front camera input

Front camera input which will be selected after leaving the reverse gear.
Via the OSD menu you can select show time:

- 3 sec
- 5 sec
- 10 sec
- 15 sec

Camera modues

It is possible to addjust the camera mode in Type 1 & Type 2



	REMOTE	SETTING	Function
MIB3		TYPE 1	Full screen (rear & front camera mode)
		TYPE 2	4:3 screen (rear & front camera mode)

NOTES

-
- We recommend that the installation will be performed by a qualified specialist
 - Check the other tabs for "Compatibility" - "Package contents" - "Product specifications"