

Rear & Front camera interface Mazda CX5 MZD 10.25"

Art. Nr: RC-MAZ-CX5



DESCRIPTION

General

The NavInc NAVconnect interfaces allow for connecting video sources to the original Mazda CX5 with MZD Connect 10.25" system.

The interface is equipped with various options such as; 1* Front camera input, 1* Rear camera input & 1* LVDS input.

Features

- 1x Rear camera input
- 1x Front camera input (with auto switch OFF)
- Adjustable parking lines via OSD menu
- LVDS input to connect APPplay or NAVplay device
- 3 Year warranty & Support

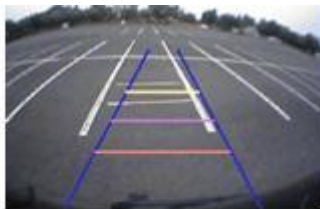
CAMERA FEATURES

Rear camera input with Parking guidelines

Rear camera input with parking guidelines option.

The guidelines make it much easier to determine the distance to the object you are driving towards.

The guidelines are adjustable horizontal as well as vertical so the lines can be adjusted to the car.



Ajustable guide lines

Front camera input

Front camera input which will be selected after leaving the reverse gear.

Via the OSD menu you can select show time:

- 3 sec
- 5 sec
- 10 sec
- 15 sec

NOTES

- We recommend that the installation will be performed by a qualified specialist
- Check the other tabs for "Compatibility" - "Package contents" - "Product specifications"



COMPATIBILITY

CAR

This kit is compatible with the following car models:

Mazda

Mazda 3	2019-20..	MZD Connect 10.25"
---------	-----------	--------------------

Not Compatible with the following units:

VPNALF-17C272-AD

Note:

- We recommend that the installation will be performed by a qualified specialist