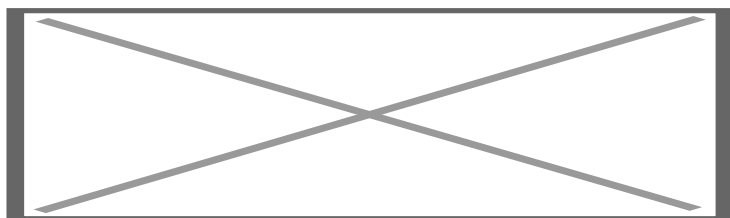


## Rear & Front camera interface Mercedes MBUX (7" & 10.25")

**Art. Nr:** RC-MB-MBUX

---



### DESCRIPTION

---

#### General

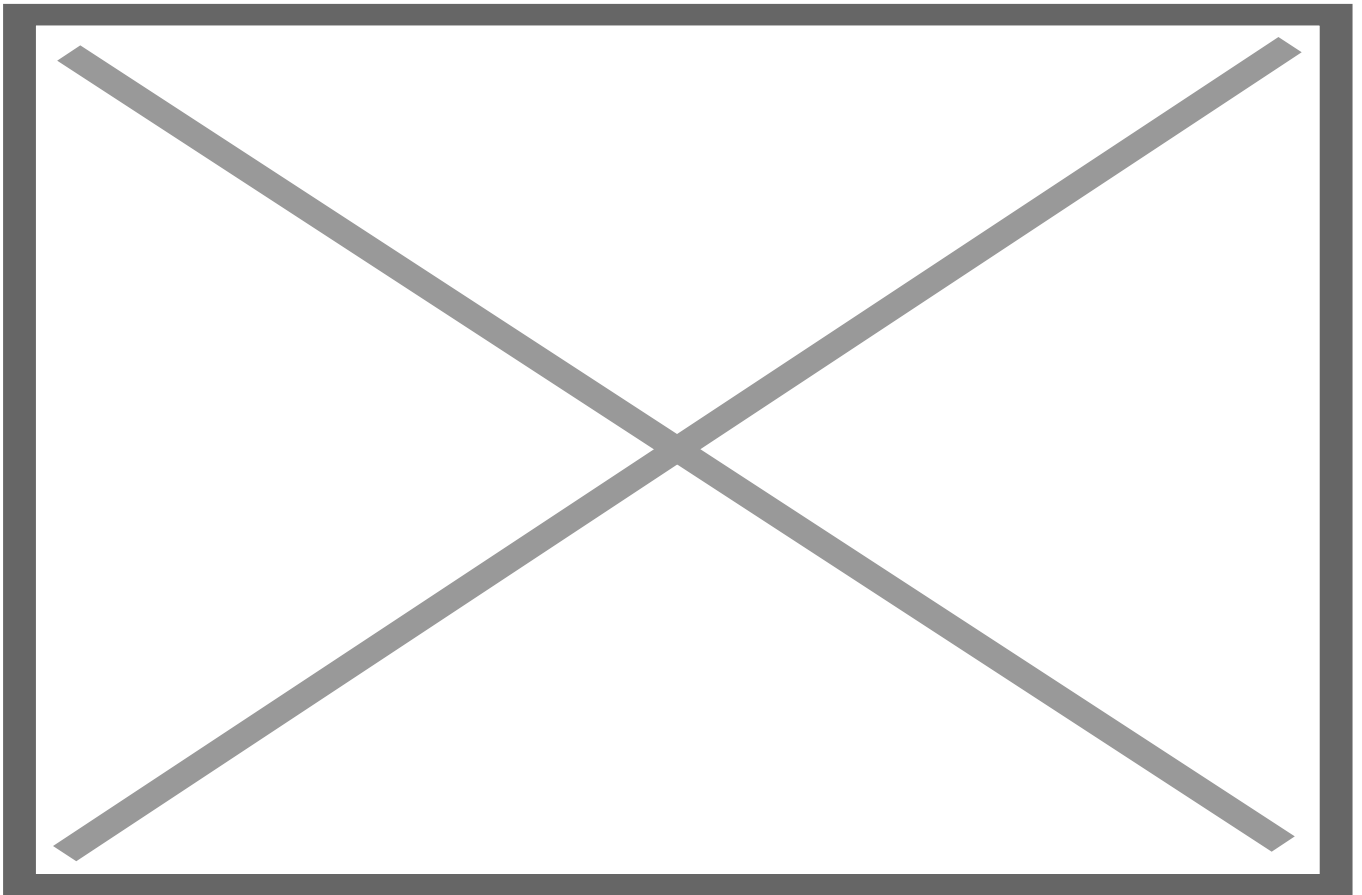
Via the NavInc NAVconnect camera interface it is possible to connect an aftermarket Front & Rear camera to the original Comand NTG6 MBUX system of Mercedes (7" & 10.25").

#### Features

- 1x Rear camera input
- 1x Front camera input (with auto switch OFF)
- Auto switch to rear camera input when car is in reverse
- Auto switch to front camera input when leaving reverse gear
- iPAS parking lines for 7" MBUX (moveable grid lines)
- Adjustable parking lines via OSD menu (only 7" MBUX)
- Split screen function (only 10.25" MBUX)
- OEM steering wheel button support (to activate front camera input manually)
- Support NTSC & PAL videosignals
- 3 Year warranty & Support

#### ***Example installation:***

#### OEM BUTTON



## **CAMERA FEATURES**

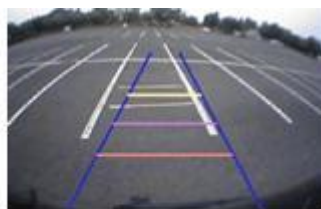
---

### **Rear camera input with Parking guidelines**

Rear camera input with parking guidelines option.

The guidelines makes it much easier to determine the distance to the object you are driving towards.

The guidelines are adjustable horizontal as well as vertical so the lines can be adjusted to the car.



**Ajustable guide lines**

### **Front camera input**

Front camera input which will be selected after leaving the reverse gear.

Via the OSD menu you can select show time:

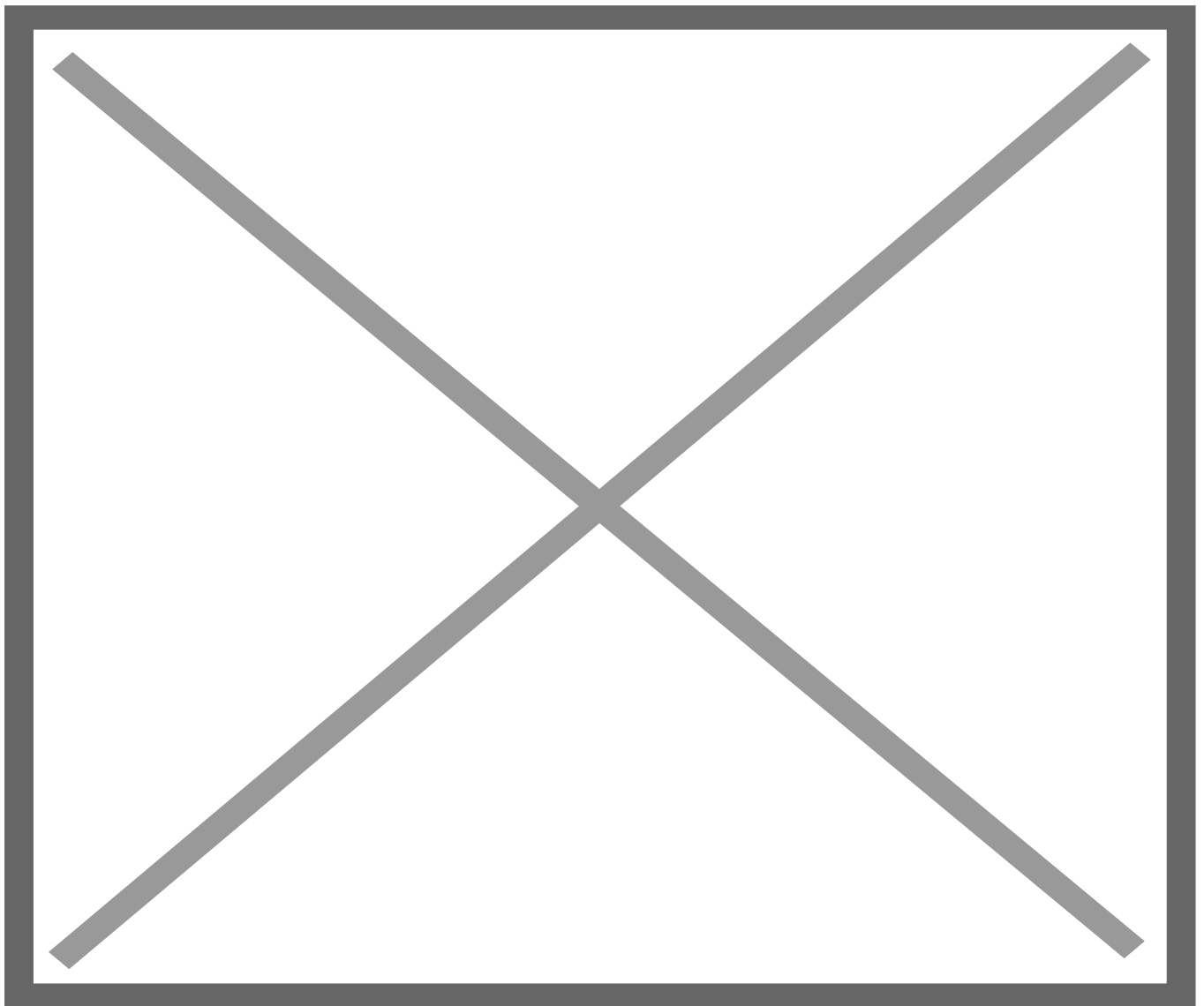
3 sec

5 sec

10 sec

15 sec

### **Split screen function (only 10.25 MBUX)**



### **NOTES**

---

- We recommend that the installation will be performed by a qualified specialist
- Check the other tabs for "Compatibility" - "Package contents" - "Product specifications"

## LEGAL INFORMATION

---

The driver of the vehicle should not be inferred from the motion images. In many countries, watching movies while driving is prohibited. Therefore we accept no responsibility for material or personal injuries, directly or indirectly, due to installation of the interface modules.

Interface and Software basic information:

The NavInc interfaces are no navigation systems or screens to replace the navigation system. The NavInc interfaces enable the possibilities to connect different Audio/Video sources to the navigation system.

Manufacturers create adjusted software and hardware versions, options and enhancements which ensures that the compatibility of the products cannot be guaranteed 100%. Compatibility lists are based on customer feedback and experiences and will constantly be updated for optimal customer support.

## REQUIREMENTS

---

<b>AUDIO OUTPUT</b>	The interface inserts ONLY video signals into the infotainment.
<b>CVBS</b>	Compatible with PAL & NTSC sources.
<b>LVDS</b>	Not available
<b>SCREEN</b>	Interface is compatible with 7 inch & 10.25 inch MBUX
<b>FRONT CAMERA</b>	<p>The front camera input will automatically switch after leaving the reverse gear.</p> <p>You can set the display time in seconds via the OSD menu (1-15 sec).</p>
<b>OEM REAR CAMERA</b>	The interface does switch back automatically to the OEM rear camera input when the reverse gear is engaged.

<b>GUIDELINES</b>	Static lines are available via the interface OSD menu (only for MBUX 7")
<b>iPAS</b>	iPAS option is only available with MBUX 7" (moveable grid lines)
<b>PIP</b>	Parking sensor overlay option is only available for MBUX 7" (Picture in Picture)
<b>REAR SELECT CAMERA INPUT</b>	Interface will respond on CAN for cars with auto gearbox. When manual gear box please use the rear detection wire.
<b>INSTALLATION</b>	We recommend that the installation will be performed by a qualified specialist