



DESCRIPTION

General

Brake light camera Fiat Ducato/Citroen Jumper/Peugeot Boxer NTSC (2006-2014) with SONY CCD lens.

Features

- Sony CCD Lens
- Resolution 976 x 494 pixels (NTSC)
- 650-700 TV lines
- IR-Leds
- Ignition Power proof (+15)
- IP68 Waterproof
- E-mark certification: E9-10R.05.1811
- CE-mark: EN 55022: 2010; EN 61000-3-2:2006+A1:2009+A2:2009; EN61000-3-3:2008; EN 55024:2010
- FCC-mark: ANSI C63.4-2003
- 2 Year warranty & Support

EXCLUSIVE CAMERA FEATURES

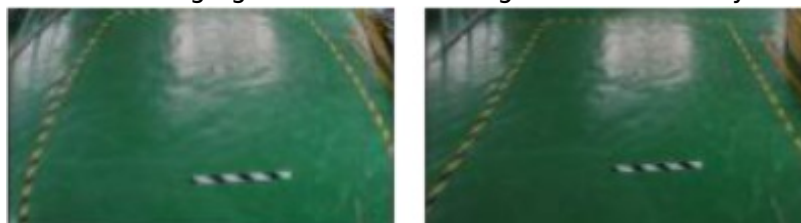
SONY CCD

High End SONY CCD Lens, highest quality brake light camera lens in the market.

SONY

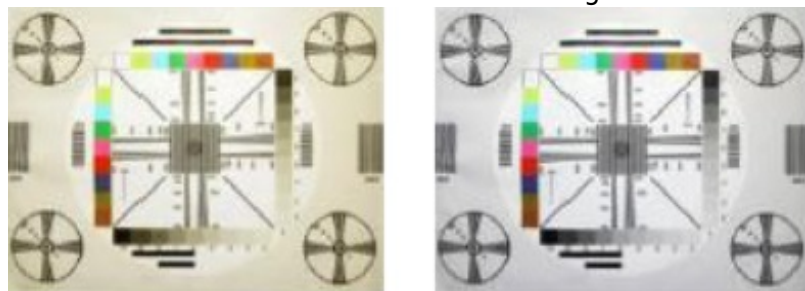
Bulging auto correction

Unwanted bulging in the camera image is automatically corrected.



Discoloration auto correction

Unwanted discolorations in the camera image is automatically corrected.



Overlighting auto correction

The appearance of a bright background or lamps in the camera image is automatically corrected.



Ignition Power proof (+15)

It is possible to connect the powersupply to an ignition feed (+15), because we use the highest quality camera.

In this way you are able to watch the camera also in DRIVE gear or via manual selection.

NOTES

- We recommend that the installation will be performed by a qualified specialist
- Check also the other tabs for "Compatibility" - "Package contents" - "Product specifications"

LEGAL NOTICE

Please check before purchase if it is aloud to install this camera and it wont affect your MOT.

NAVcam
camera solutions

COMPATIBILITY

CAR

This camera is compatible with the following vehicles:

Peugeot

Boxer 2006-2015

Citroen

Jumpber 2006-2015

Fiat

Ducato 2006-2015

NOTES

- RCA output = male
- CVBS signal is NTSC